



PRODUCT CATALOG

January 2025

The Original Flame-Free Refrigerant Press Fittings



**PROUDLY MADE
IN AMERICA**

rapidlockingsystem.com

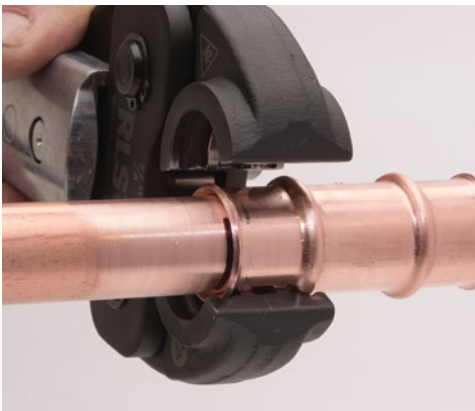
Table of Contents

Introduction	3-4
Couplings and Slip Couplings	5
90° Elbows and 90° Street Elbows.....	6
45° Elbows and Tees	7
Reducers and Reducing Bushings.....	8
SAE/Euro Flares and Caps.....	9
Ancillary Products	10-11
Tools, Jaws and Accessories	12-15
Technical Data.....	16

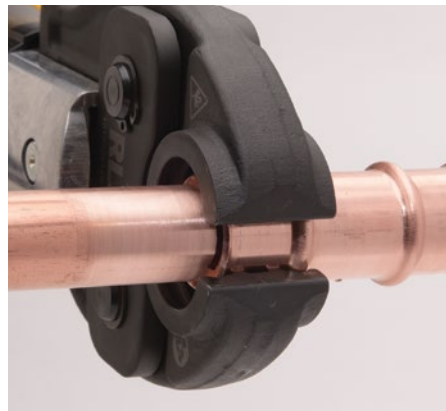
15-Year Limited Warranty

All RLS press fittings are backed by a 15-year limited warranty when installed in accordance with RLS installation instructions using RLS-approved tools and jaws. See information on rapidlockingsystem.com for complete details.

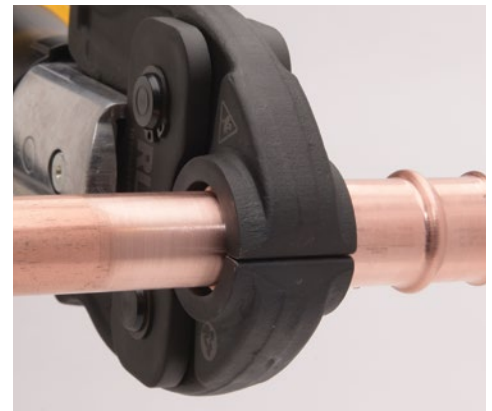
Fast, reliable HVAC/R joints as easy as 1-2-3!



1. Insert the tube



2. Align the jaws



3. Pull the trigger

Get reliable, flame-free connections in seconds with RLS, the original HVAC/R press fittings. Just prep the copper tube ends and then let the battery-powered tool do the work. Our patented technology results in two 360° metal-to-metal connections with each press – creating a permanent mechanical joint every time, without the dangers of an open flame and flammable gas.

With our proven, unmatched track record of success – including more than 20 million fittings installed worldwide since 2015 – you can count on the dependability of RLS. Plus, RLS-compatible jaws are available for most press tools (see page 14 for details).

The most proven, most trusted and most complete line of HVAC/R press fittings in the world.



RLS ADVANTAGES:

- *Field-proven since 2015*
- *20 million+ installed fittings*
- *Sizes from 1/4" to 2-1/8"*
- *Connections in 10 seconds*
- *UL Listed to 700 psi*
- *360° metal-to-metal joints*
- *Works in tight spaces*
- *No gas or brazing materials*
- *No flame, no fire hazards*
- *No hot work permits*
- *No fire watch*
- *No nitrogen purging*
- *Made in America*
- *15-year limited warranty*

Introduction

“RLS has been invaluable to growing our business. We’re able to get jobs done quicker without sacrificing the quality of our work and we’ve won more jobs because of it. And our clients always come back to us.”

– Jeff DeMassari
First Choice Heating & Cooling

“I’m never going to braze again unless I absolutely need to. RLS press fittings are faster and safer to install, but provide just as reliable of a connection as if it had been brazed. They are a gamechanger that have saved me countless hours of installation time and fire prep.”

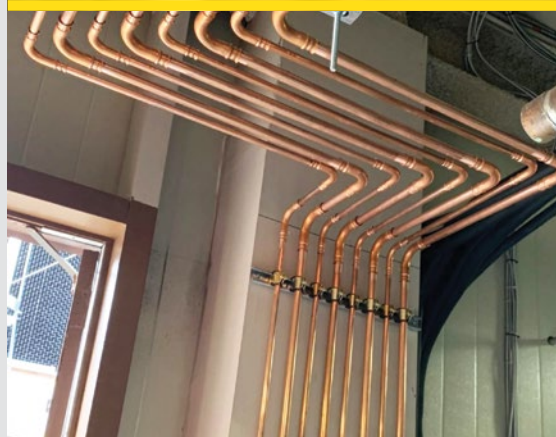
– Sam Wyatt
Protec Industrial

“The amount of time we save when piping, and the security of knowing we can press fittings and not have to constantly purge nitrogen, is priceless.”

– Robert Swieconek
Superheat and Subcooling HVAC

“RLS press fittings are at the point where they’re just as dependable as any other techniques available to contractors today, but don’t require the expensive, labor-intensive training like brazing does. Once you get going with the tool, pressing becomes second nature.”

– Ian Barcelos
ICR Industries



Approved Refrigerant List

A1	R134A	R404A	R407	R410A	R417A	R421A	R422	R424A	R427A
	R434A	R437A	R438A	R448A	R449	R450A	R453A	R456A	R460A
	R460B	R460C	R463A	R507	R513	R718	Ethylene Glycol		
A2L	R32	R445A	R446A	R447A	R447B	R451A	R451B	R452B	R454A
	R454B	R454C	R455A	R1234yf	R1234ze				

Contact us about special blends or other refrigerants not listed here.

Check your local codes to ensure that RLS press fittings are suitable for use with your particular refrigerant.

RLS fittings are also compatible with, but not listed for, the following industrial (non-refrigerant) gasses: nitrogen, argon, helium and oxygen (non-medical). Consult your local code jurisdiction, as necessary, for installs with these non-refrigerant fluids.

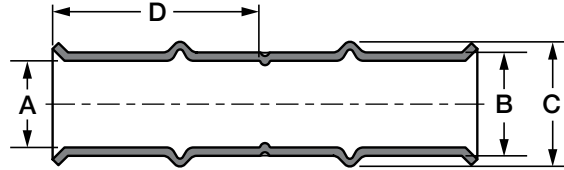
COUPLINGS



Couplings



DIMENSIONS

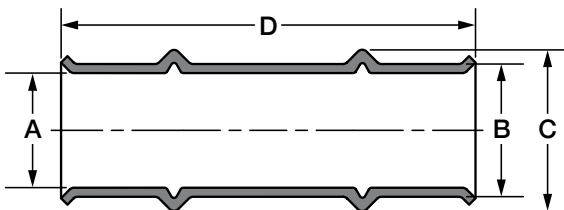


Size (Inch)	Part Number	Dimensions (Inches)				Box Quantity	Carton Quantity	Carton Weight
		A	B	C	D			
1/4	3011040400111	0.26	0.34	0.45	0.95	10	100	2.3 lbs.
5/16	3011050500111	0.32	0.40	0.52	0.93	10	100	2.9 lbs.
3/8	3011060600111	0.39	0.47	0.59	0.98	10	100	3.5 lbs.
1/2	3011080800111	0.51	0.59	0.73	1.25	10	100	6.1 lbs.
5/8	3011101000111	0.64	0.74	0.89	1.24	10	100	9.5 lbs.
3/4	3011121200111	0.76	0.88	1.07	1.29	10	40	5.5 lbs.
7/8	3011141400111	0.89	1.02	1.19	1.31	10	40	7.0 lbs.
1	3011161600111	1.01	1.16	1.36	1.31	10	40	9.5 lbs.
1-1/8	3011181800111	1.14	1.29	1.45	1.29	10	40	10.3 lbs.
1-1/4	3011202000111	1.26	1.41	1.62	1.30	12	24	7.4 lbs.
1-3/8	3011222200111	1.39	1.54	1.75	1.57	12	24	9.0 lbs.
1-5/8	3011262600111	1.64	1.88	2.18	1.85	4	4	3.4 lbs.
2-1/8	3011343400111	2.14	2.38	2.68	2.34	4	4	5.5 lbs.

Slip Couplings



DIMENSIONS



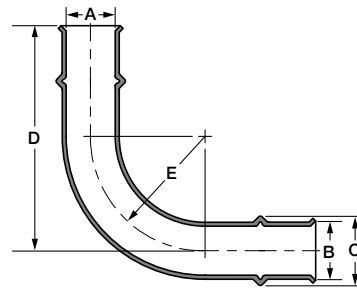
Size (Inch)	Part Number	Dimensions (Inches)				Box Quantity	Carton Quantity	Carton Weight
		A	B	C	D			
1/4	3021040400111	0.26	0.34	0.45	2.00	10	100	2.3 lbs.
5/16	3021050500111	0.32	0.40	0.52	2.01	10	100	2.9 lbs.
3/8	3021060600111	0.39	0.47	0.59	2.05	10	100	3.5 lbs.
1/2	3021080800111	0.51	0.59	0.73	2.74	10	100	6.1 lbs.
5/8	3021101000111	0.64	0.74	0.89	2.75	10	100	9.5 lbs.
3/4	3021121200111	0.76	0.88	1.07	2.75	10	40	5.5 lbs.
7/8	3021141400111	0.89	1.02	1.19	2.74	10	40	7.0 lbs.
1-1/8	3021181800111	1.14	1.29	1.45	2.77	10	40	10.3 lbs.
1-3/8	3021222200111	1.39	1.54	1.75	3.15	12	24	9.0 lbs.

ELBOWS

90° Elbows



DIMENSIONS

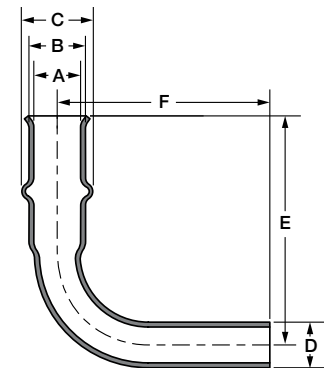


Size (Inch)	Part Number	Dimensions (Inches)					Box Quantity	Carton Quantity	Carton Weight
		A	B	C	D	E			
1/4	3031040400111	0.26	0.34	0.45	2.01	0.68	10	100	4.4 lbs.
5/16	3031050500111	0.32	0.40	0.52	2.13	0.81	10	100	5.8 lbs.
3/8	3031060600111	0.39	0.47	0.59	2.27	0.93	10	100	7.4 lbs.
1/2	3031080800111	0.51	0.59	0.73	2.88	1.18	10	100	11.6 lbs.
5/8	3031101000111	0.64	0.74	0.89	3.21	1.47	10	100	20.0 lbs.
3/4	3031121200111	0.76	0.88	1.07	3.47	1.76	10	40	12.3 lbs.
7/8	3031141400111	0.89	1.02	1.19	3.75	2.03	10	40	16.6 lbs.
1	3031161600111	1.01	1.16	1.36	4.04	2.33	10	40	22.2 lbs.
1-1/8	3031181800111	1.14	1.29	1.45	4.29	2.54	10	40	27.8 lbs.
1-1/4	3031202000111	1.26	1.41	1.62	4.30	2.53	5	5	3.7 lbs.
1-3/8	3031222200111	1.39	1.54	1.75	4.54	2.75	5	5	4.9 lbs.
1-5/8	3031262600111	1.64	1.88	2.18	5.49	3.25	2	2	4.6 lbs.
2-1/8	3031343400111	2.14	2.38	2.68	6.83	4.25	2	2	7.3 lbs.

90° Street Elbows



DIMENSIONS

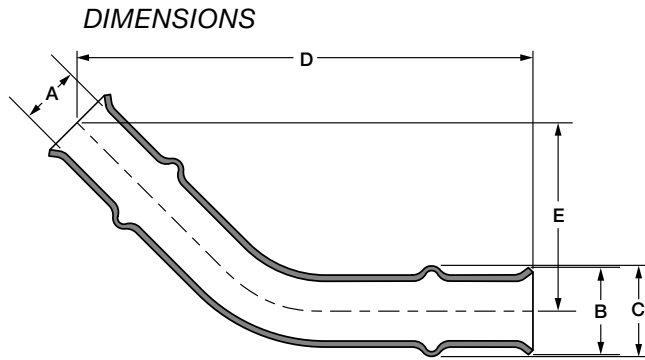


Size (Inch)	Part Number	Dimensions (Inches)						Box Quantity	Carton Quantity	Carton Weight
		A	B	C	D	E	F			
3/8	3501060600111	0.39	0.47	0.59	0.38	1.75	1.89	10	100	4.8 lbs.
1/2	3501080800111	0.51	0.59	0.73	0.50	2.56	2.65	10	100	9.2 lbs.
5/8	3501101000111	0.64	0.74	0.89	0.63	2.64	2.81	10	100	15.1 lbs.
3/4	3501121200111	0.76	0.88	1.07	0.75	3.00	3.15	10	40	9.2 lbs.
7/8	3501141400111	0.89	1.02	1.19	0.88	3.25	3.40	10	40	12.7 lbs.
1-1/8	3501181800111	1.14	1.29	1.45	1.13	3.80	3.93	10	40	22.1 lbs.
1-3/8	3501222200111	1.39	1.54	1.75	1.38	4.38	4.51	5	5	3.8 lbs.

ELBOWS/TEES



45° Elbows

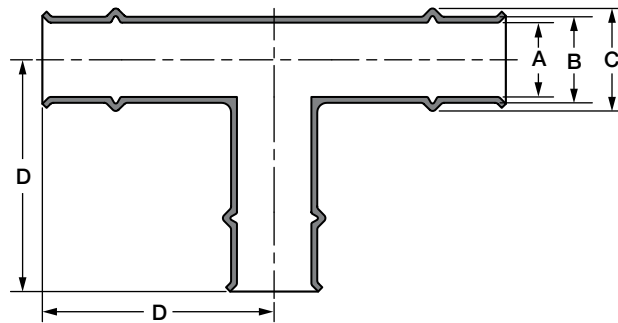


Size (Inch)	Part Number	Dimensions (Inches)					Box Quantity	Carton Quantity	Carton Weight
		A	B	C	D	E			
3/8	3081060600111	0.39	0.56	0.59	2.94	1.21	10	100	5.8 lbs.
1/2	3081080800111	0.51	0.71	0.73	3.72	1.54	10	100	9.6 lbs.
5/8	3081101000111	0.64	0.86	0.88	3.97	1.64	10	100	15.9 lbs.
3/4	3081121200111	0.76	1.02	1.07	4.12	1.70	10	40	9.4 lbs.
7/8	3081141400111	0.89	1.13	1.19	4.49	1.86	10	40	12.7 lbs.
1-1/8	3081181800111	1.14	1.41	1.45	4.84	2.00	10	40	20.2 lbs.
1-3/8	3081222200111	1.39	1.68	1.75	5.11	2.11	5	5	3.8 lbs.
1-5/8	3081262600111	1.64	2.00	2.18	6.22	2.58	2	2	3.1 lbs.
2-1/8	3081343400111	2.14	2.57	2.68	7.44	3.08	2	2	4.7 lbs.

Tees



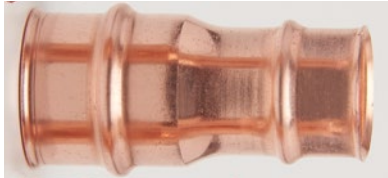
DIMENSIONS



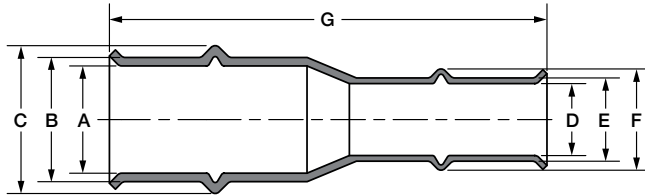
Size (Inch)	Part Number	Dimensions (Inches)				Box Quantity	Carton Quantity	Carton Weight
		A	B	C	D			
3/8	3091060606111	0.39	0.47	0.59	1.63	10	100	8.4 lbs.
1/2	3091080808111	0.51	0.59	0.72	2.23	10	100	26.4 lbs.
5/8	3091101010111	0.64	0.74	0.87	2.30	10	100	26.8 lbs.
3/4	3091121212111	0.76	0.88	1.05	2.38	10	40	15.0 lbs.
7/8	3091141414111	0.89	1.02	1.19	2.43	10	40	20.3 lbs.
1	3091161616111	1.01	1.16	1.36	2.59	10	40	23.7 lbs.
1-1/8	3091181818111	1.14	1.29	1.45	2.56	10	40	30.4 lbs.
1-1/4	3091202020111	1.26	1.41	1.62	3.36	5	5	4.7 lbs.
1-3/8	3091222222111	1.39	1.54	1.75	3.36	5	5	5.3 lbs.
1-5/8	3091262626111	1.64	1.88	2.18	3.95	2	2	4.7 lbs.
2-1/8	3091343434111	2.14	2.38	2.68	4.18	2	2	6.3 lbs.

REDUCERS/REDUCING BUSHINGS

Reducers



DIMENSIONS

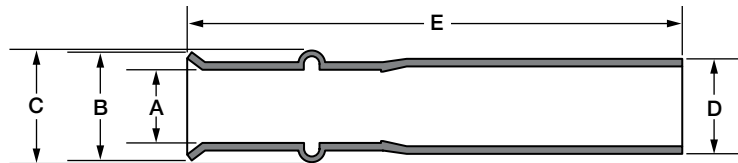


Size (Inch)	Part Number	Dimensions (Inches)							Box Quantity	Carton Quantity	Carton Weight
		A	B	C	D	E	F	G			
3/8 to 1/4	3051060400111	0.39	0.47	0.59	0.26	0.34	0.45	2.24	10	100	3.8 lbs.
3/8 to 5/16	COMING SOON	—	—	—	—	—	—	—	—	—	—
1/2 to 1/4	3051080400111	0.51	0.59	0.73	0.26	0.34	0.45	2.71	10	100	5.0 lbs.
1/2 to 3/8	3051080600111	0.51	0.59	0.73	0.39	0.47	0.58	2.58	10	100	5.5 lbs.
5/8 to 1/4	3051100400111	0.64	0.74	0.89	0.26	0.34	0.45	2.70	10	100	7.9 lbs.
5/8 to 3/8	3051100600111	0.64	0.74	0.89	0.39	0.47	0.58	2.70	10	100	8.1 lbs.
5/8 to 1/2	3051100800111	0.64	0.74	0.87	0.51	0.59	0.72	3.10	10	100	8.7 lbs.
3/4 to 1/2	3051120800111	0.76	0.88	1.05	0.51	0.59	0.72	3.10	10	40	4.7 lbs.
3/4 to 5/8	3051121000111	0.76	0.88	1.05	0.64	0.74	0.87	3.00	10	40	5.2 lbs.
7/8 to 1/2	3051140800111	0.89	1.02	1.19	0.51	0.59	0.72	3.05	10	40	5.6 lbs.
7/8 to 5/8	3051141000111	0.89	1.02	1.19	0.64	0.74	0.87	3.05	10	40	6.6 lbs.
7/8 to 3/4	3051141200111	0.89	1.02	1.19	0.76	0.88	1.05	3.11	10	40	7.3 lbs.
1 to 7/8	3051161400111	1.01	1.16	1.37	0.89	1.02	1.19	3.09	10	40	9.1 lbs.
1-1/8 to 5/8	3051181000111	1.14	1.29	1.45	0.64	0.74	0.87	3.25	10	40	9.0 lbs.
1-1/8 to 3/4	3051181200111	1.14	1.29	1.45	0.76	0.88	1.05	3.18	10	40	9.6 lbs.
1-1/8 to 7/8	3051181400111	1.14	1.29	1.45	0.89	1.02	1.19	3.10	10	40	9.9 lbs.
1-3/8 to 7/8	3051221400111	1.39	1.54	1.75	0.89	1.02	1.19	3.66	12	24	7.9 lbs.
1-3/8 to 1-1/8	3051221800111	1.39	1.54	1.75	1.14	1.29	1.45	3.34	12	24	8.2 lbs.
1-5/8 to 1-1/8	3051261800111	1.64	1.88	2.18	1.14	1.29	1.45	4.50	4	4	2.9 lbs.
1-5/8 to 1-3/8	3051262200111	1.64	1.88	2.18	1.39	1.54	1.75	4.30	4	4	3.0 lbs.
2-1/8 to 1-3/8	3051342200111	2.14	2.38	2.68	1.39	1.54	1.75	5.20	4	4	4.3 lbs.
2-1/8 to 1-5/8	3051342600111	2.14	2.38	2.68	1.64	1.88	2.18	5.05	4	4	5.2 lbs.

Reducing Bushings



DIMENSIONS



Size (Inch)	Part Number	Dimensions (Inches)					Box Quantity	Carton Quantity	Carton Weight
		A	B	C	D	E			
1/2 to 3/8	3521080600111	0.39	0.56	0.59	0.50	2.50	10	100	4.6 lbs.
5/8 to 1/2	3521100800111	0.51	0.68	0.72	0.63	2.95	10	100	7.3 lbs.
3/4 to 5/8	3521121000111	0.64	0.84	0.87	0.75	2.98	10	40	4.4 lbs.
7/8 to 3/4	3521141200111	0.76	1.02	1.05	0.88	3.04	10	40	5.9 lbs.
1-1/8 to 7/8	3521181400111	0.89	1.10	1.19	1.13	3.06	10	40	8.5 lbs.
1-3/8 to 1-1/8	3521221800111	1.14	1.40	1.45	1.38	3.12	12	24	7.0 lbs.

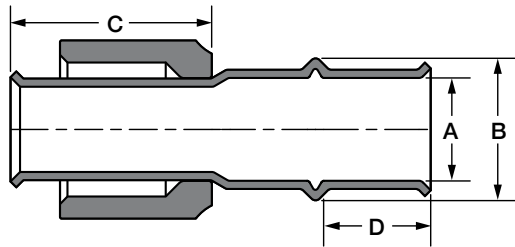
FLARES/CAPS



SAE/Euro Flares



DIMENSIONS



Per ARI Guideline M-97 45° Refrigeration Flare Fittings and Copper Tubing

Size	Torque, ft-lbs [N*m]	
	Minimum	Maximum
1/4"	8 [11]	10 [14]
3/8"	15 [20]	25 [34]
1/2"	25 [34]	35 [47]
5/8"	40 [54]	55 [75]
3/4"	50 [68]	60 [81]

Note: Per Section 9.5 of the M-97 Guideline, when applying torque to the flare connection the use of lubricants/lubrication is not recommended.

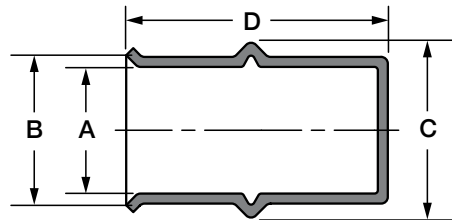
Note: Applying a torque above the maximum limit may distort or damage the sealing surface of the flare.

Size (Inch)	Part Number	Dimensions (Inches)				Box Quantity	Carton Quantity	Carton Weight
		A	B	C	D			
1/4	3291040000111	0.26	0.45	1.38	0.56	10	100	2.5 lbs.
3/8	3291060000111	0.39	0.59	1.38	0.58	10	100	3.7 lbs.
1/2	3291080000111	0.51	0.72	1.13	0.75	10	100	5.9 lbs.
5/8	3291100000111	0.64	0.87	1.48	0.75	10	40	3.6 lbs.
3/4	3291120000111	0.76	1.05	1.48	0.80	10	40	5.2 lbs.

Caps



DIMENSIONS

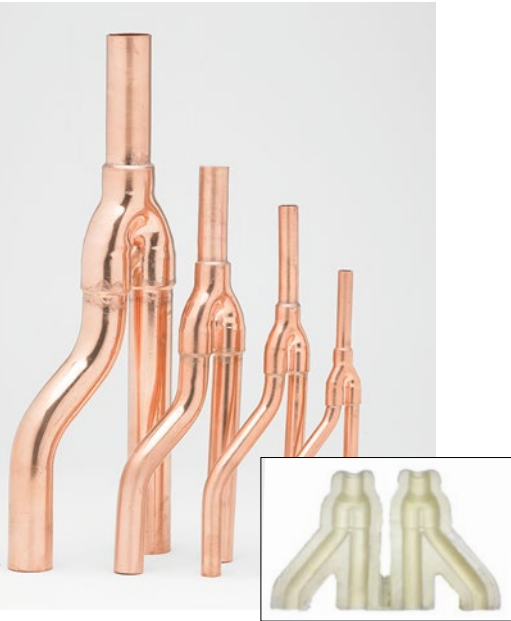


Size (Inch)	Part Number	Dimensions (Inches)				Box Quantity	Carton Quantity	Carton Weight
		A	B	C	D			
1/4	3071040000111	0.26	0.34	0.45	1.45	10	100	1.8 lbs.
5/16	3071050000111	0.32	0.40	0.52	1.45	10	100	2.3 lbs.
3/8	3071060000111	0.39	0.47	0.59	1.45	10	100	2.6 lbs.
1/2	3071080000111	0.51	0.59	0.72	1.97	10	100	5.1 lbs.
5/8	3071100000111	0.64	0.74	0.87	1.98	10	100	6.9 lbs.
3/4	3071120000111	0.76	0.88	1.05	1.97	10	40	3.8 lbs.
7/8	3071140000111	0.89	1.02	1.19	1.90	10	40	4.9 lbs.
1	3071160000111	1.01	1.16	1.36	2.00	10	40	7.2 lbs.
1-1/8	3071180000111	1.14	1.29	1.45	1.99	10	40	7.8 lbs.
1-1/4	3071200000111	1.26	1.41	1.62	2.50	12	24	6.5 lbs.
1-3/8	3071220000111	1.39	1.54	1.75	2.49	12	24	7.2 lbs.

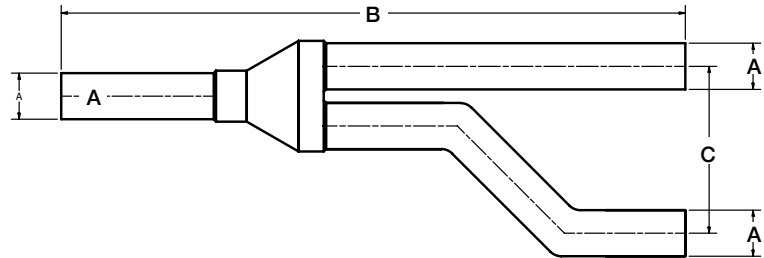
ANCILLARY PRODUCTS

ODM products are compatible with RLS fittings.

ODM Y-Joints



DIMENSIONS

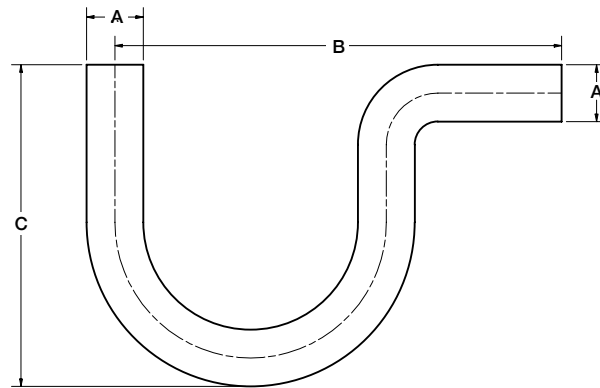


Size (Inch)	Part Number with insulation	Part Number without insulation	Dimensions (Inches)			Box Quantity	Carton Quantity
			A	B	C		
3/8	3771060606130	3771060606111	0.38	7.56	2.36	2	44
1/2	3771080808130	3771080808111	0.50	8.94	2.48	2	44
5/8	3771101010130	3771101010111	0.63	9.45	2.60	2	42
3/4	3771121212130	3771121212111	0.75	10.16	2.72	2	24
7/8	3771141414130	3771141414111	0.88	12.09	2.87	2	24
1-1/8	3771181818130	3771181818111	1.13	13.11	3.54	1	10
1-3/8	377122222130	377122222111	1.38	14.92	4.06	1	10

ODM P-Traps



DIMENSIONS



Size (Inch)	Part Number	Dimensions (Inches)			Box Quantity	Carton Quantity
		A	B	C		
1/2	3761080800111	0.50	5.12	3.54	2	80
5/8	3761101000111	0.63	5.12	3.62	2	80
3/4	3761121200111	0.75	5.91	4.25	2	38
7/8	3761141400111	0.88	6.69	4.65	2	38
1-1/8	3761181800111	1.13	8.27	5.98	2	10
1-3/8	3761222200111	1.38	10.24	7.48	2	10

ANCILLARY PRODUCTS

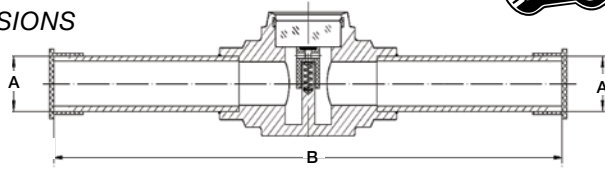
ODM products are compatible with RLS fittings.



ODM Sight Glasses



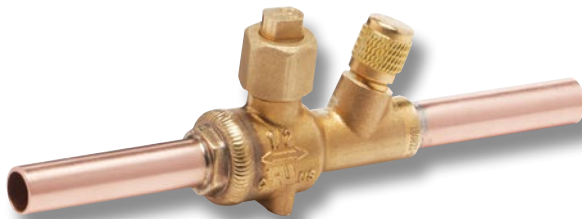
DIMENSIONS



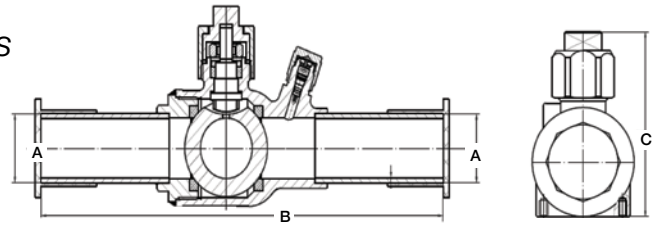
Size (Inch)	Part Number	Dimensions (Inches)		Box Quantity	Carton Quantity
		A	B		
1/4	3781040400111	0.25	4.02	1	100
3/8	3781060600111	0.37	4.69	1	100
1/2	3781080800111	0.50	6.10	1	100
5/8	3781101000111	0.63	6.14	1	50
3/4	3781121200111	0.75	6.34	1	50
7/8	3781141400111	0.88	6.57	1	50
1-1/8	3781181800111	1.13	7.56	1	30

ODM Ball Valves

(Bi-Directional with Schrader valves)



DIMENSIONS

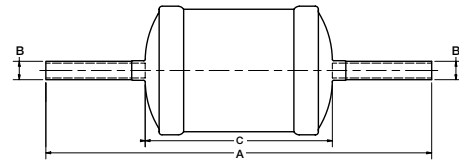


Size (Inch)	Part Number	Dimensions (Inches)			Box Quantity	Carton Quantity
		A	B	C		
1/4	3791040400111	0.25	6.75	2.02	1	40
3/8	3791060600111	0.37	6.34	2.02	1	40
1/2	3791080800111	0.50	6.56	2.02	1	40
5/8	3791101000111	0.63	6.77	2.30	1	40
3/4	3791121200111	0.75	6.99	2.60	1	30
7/8	3791141400111	0.88	7.24	2.60	1	30
1-1/8	3791181800111	1.13	8.16	3.27	1	30
1-3/8	3791222200111	1.37	9.00	3.88	1	24

ODM Filter Driers



DIMENSIONS



Size (Inch)	Part Number	Desiccant (Cubic Inches)	Dimensions (Inches)			Box Quantity	Carton Quantity
			A	B	C		
3/8 Liquid Line	3821060600111	8	7.95	0.38	3.90	1	30
3/8 Liquid Line	3831060600111	16	8.86	0.38	4.80	1	30
1/2 Liquid Line	3831080800111	16	8.94	0.50	4.80	1	30
3/8 Liquid Line Bi-Directional	3921060600111	8	7.87	0.38	3.82	1	30
3/8 Liquid Line Bi-Directional	3931060600111	16	8.66	0.38	4.61	1	30

Part Number	Connections Inlet/Outlet	Flow Capacity Ton @ 1psi P ^A (For kw Multiply Ton By 3.5)				Water Capacity Drops of Water									
		R134a	R22 & R410A	R407C	R404A & R507	R134a		R22		R407c		R410A		R404A & R507	
						75°F	125°F	75°F	125°F	75°F	125°F	75°F	125°F	75°F	125°F
3821060600111	3/8" ODM	5.42	6.0	6.0	4.0	265	245	250	225	205	165	170	130	275	260
3831060600111	3/8" ODM	6.2	6.8	6.8	4.57	396	366	271	336	306	246	256	196	406	286
3831080800111	1/2" ODM	8.5	9.4	9.4	6.2	396	366	271	336	306	246	256	196	406	286
3921060600111	3/8" ODM	4.8	5.1	5.0	3.33	265	245	250	225	205	165	170	130	275	260
3931060600111	3/8" ODM	4.9	5.2	5.2	3.49	359	341	360	307	361	333	327	302	392	365

All ratings are in accordance with ANSI/AHRI standard 710-2009.

Klauke® 32 kN and 19 kN Press Tools

Benefits:

- Durable, high-quality construction that is built to last
- Short pressing cycle – 10 seconds or less – increases productivity
- Compact design and 350° jaw rotation allows technician to install in tight spaces
- Automatic piston return
- Safety feature that lets the press cycle be interrupted, allowing for manual release of the piston, if needed
- High-quality, powerful Makita Li-Ion technology, with charging time of just 15 minutes (2 batteries and 1 charger included)
- Tool service indicated via imbedded LEDs, illuminates at 10,000 cycles



32 kN press tool



19 kN press tool

32 kN Tool Features:

Pressing Force: 32 kN

Presses/charge: 350-400 (4.0 Ah)

Battery Capacity: 18V / 4.0 Ah Li-Ion Makita (BL1840B)

Charging Time: 15 minutes

Operating Temp. Range: -10°C to 40°C (14°F to 104°F)

Weight with Battery:

Without Jaw: 3.6 kg (8.0 lb)

Including Jaw: 5.7 kg (12.5 lb)

Dimensions: 359 x 76 x 317 mm

19 kN Tool Features:

Pressing Force: 19 kN

Presses/charge: 100-150 (2.0 Ah)

Battery Capacity: 18V / 2.0 Ah Li-Ion Makita (BL1820B)

Charging Time: 15 minutes

Operating Temp. Range: -10°C to 40°C (14°F to 104°F)

Weight with Battery:

Without Jaw: 1.8 kg (4.0 lb)

Including Jaw: 3.1 kg (6.8 lb)

Dimensions: 395 x 80 x 118 mm

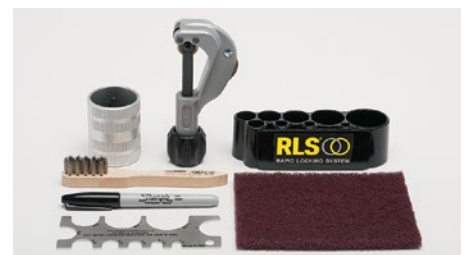
Klauke® Jaws

Klauke 32 kN Jaws

Size	Part Number
1/4"	399021321040
5/16"	399021321050
3/8"	399021321060
1/2"	399021321080
5/8"	399021321100
3/4"	399021321120
7/8"	399021321140
1"	399021321160
1-1/8"	399021321180
1-1/4"	399021321200
1-3/8"	399021321220
8-Jaw Kit	399031320801

Klauke 19 kN Jaws

Size	Part Number
1/4"	399021191040
5/16"	399021191050
3/8"	399021191060
1/2"	399021191080
5/8"	399021191100
3/4"	399021191120
7/8"	399021191140
1"	399021191160
1-1/8"	399021191180
1-1/4"	399021191200
1-3/8"	399021191220
8-Jaw Kit	399031190801



Accessory Kit:

- Tubing cutter
- RLS depth gauge
- RLS press gauge
- Permanent marker
- Wire Brush (for jaw cleaning)
- Abrasive pad
- Deburring tool

Part Number: 399040102

Accessory kit is included in both 19 kN tool kits. 32 kN 8-jaw kit includes the depth gauge, press gauge, marker, brush and abrasive pad (no cutter or deburring tool).



Klauke® Tool and Jaw Kits



Each tool and jaw kit comes in a hard plastic carrying case. Tools sold in North America include two batteries and a battery charger (not included in kits sold outside North America). Batteries and chargers can be sourced from an RLS or Makita distributor.

North American Part Numbers (Tools include 2 batteries and a charger.)

- 32 kN Tool (no jaws)**
Part Number: 399011320001
- 19 kN Tool (no jaws)**
Part Number: 399011190001
- 19 kN Tool and 5 Jaws**
(3/8", 1/2", 5/8", 7/8", 1-1/8")
Part Number: 399011190501

International Part Numbers (Tools do not include batteries or charger.)

- 32 kN Tool (no jaws)**
Part Number: 399011320002
- 19 kN Tool (no jaws)**
Part Number: 399011190002
- 19 kN Tool and 5 Jaws**
(3/8", 1/2", 5/8", 7/8", 1-1/8")
Part Number: 399011190502

Jaw Kits

- 32 kN 8-Jaw Kit**
(1/4", 3/8", 1/2", 5/8", 3/4", 7/8", 1-1/8", 1-3/8")
Part Number: 399031320801

- 19 kN 8-Jaw Kit**
(1/4", 3/8", 1/2", 5/8", 3/4", 7/8", 1-1/8", 1-3/8")
Part Number: 399031190801

RIDGID® Jaws



Size	Part Number
1/4"	399022001040
5/16"	399022001050
3/8"	399022001060
1/2"	399022001080
5/8"	399022001100
3/4"	399022001120
7/8"	399022001140
1-1/8"	399022001180
1-3/8"	399022001220

RIDGID 8-Jaw Set

The RIDGID 8-Jaw Set comes in a hard plastic carrying case and includes a tube cutter, deburring tools, press gauge, depth gauge, stainless steel brush, abrasive pad and permanent marker. Jaw sizes include 1/4", 3/8", 1/2", 5/8", 3/4", 7/8", 1-1/8" and 1-3/8". The 5/16" jaw is sold separately.

Part Number: 399032000801

RIDGID 6-Jaw Set

The RIDGID 6-Jaw Kit comes in a hard plastic carrying case and includes a tube cutter, deburring tool, press gauge, depth gauge, stainless steel brush, abrasive pad and permanent marker. Jaw sizes include 1/4", 3/8", 1/2", 5/8", 3/4" and 7/8".

Part Number: 399032001045

NOTE: RIDGID press tools are sold through RIDGID distributors, available in lightweight pistol-grip and inline models.









Accessories

Part Number	Description
399011000100	Klauke Replacement Tool Case
399031000100	Klauke Jaw Case
399032000100	RIDGID Jaw Case
399040307	1-1/4" Press Gauge
399040306	Press Gauge
399040308	Depth Gauge
399040301	Tube Cutter
399040302	Small Tube Deburring Tool (1/4" - 1-1/4")

Part Number	Description
399040309	Large Tube Deburring Tool (1/2" - 2")
399040303	Stainless Steel Brush
399040304	Abrasive Pad
399040305	Permanent Marker
399040101	Safety Kit (plastic bag, pen, instructions, crimp/depth gauges)
399040203	Makita 18V Charger - DC18RC
399040202	Makita 18V Battery - BL1815
399040201	Diagnostic tool - PGA1

TOOLS, JAWS AND ACCESSORIES

Tool and Jaw Compatibility Matrix – 1/4" to 1-3/8" Fittings

			JAW MANUFACTURER				
			Klauke®			RIDGID®	Milwaukee®
TOOL MANUFACTURER	Model(s)	Size Range	15 kN	19 kN	32 kN	24 kN	32 kN
	MAP2L	1/4" – 1-1/8"	✓				
	MAP2L19	1/4" – 1-3/8"		✓			
	UAP 332	1/4" – 1-3/8"			✓		✓
	UAP 432	1/4" – 1-3/8"			✓		✓
	Romax Compact	1/4" – 1-3/8"		✓			
	Romax 3000	1/4" – 1-3/8"			✓		✓
	Romax 4000	1/4" – 1-3/8"			✓		✓
	PC-20 M	1/4" – 1-1/8"	✓				
	RP 115	1/4" – 1-1/8"	✓				
	RP 200, RP 210 RP 240, RP 241 RP 251	1/4" – 1-3/8"				✓	
	RP 330 RP 340 RP 350 RP 351	1/4" – 1-3/8"			✓		✓
	M12	1/4" – 1-3/8"				✓	
	M18 (excludes model 2674-20 short throw tool)	1/4" – 1-3/8"			✓		✓
	Pressgun Picco 6	1/4" – 1-3/8"				✓	
	Pressgun 6	1/4" – 1-3/8"			✓		✓
	ACO103	1/4" – 1-3/8"		✓			
	ACO203	1/4" – 1-3/8"			✓		✓
	ECO203	1/4" – 1-3/8"			✓		✓
	EFP203	1/4" – 1-3/8"			✓		✓
	DCE200	1/4" – 1-3/8"			✓		✓
	DCE210	1/4" – 1-3/8"				✓	

Only RLS-approved tools and jaws can be used to install RLS fittings.



Klauke® 32 kN Long-Throw Tool, Actuator and Collar Jaws (1-5/8" & 2-1/8")



Benefits:

- Fast pressing cycle of less than 25 seconds
- 350° tool rotation for flexibility
- Automatic retraction saves time on multiple presses
- High safety factor thanks to "Quickstop" function
- Precise pressing force with audible signal
- Long battery and tool service-life
- Tool information shown via OLED display or i-press® app
- High-quality, powerful Li-Ion technology for long lasting operation (2 batteries and 1 charger included)

32 kN Long-Throw Tool Features:

- Pressing Force: 32 kN
- Presses/charge: 350-400 (4.0 Ah)
- Battery Capacity: 18V / 4.0 Ah Li-Ion Makita (BL1840B)
- Charging Time: 15 minutes
- Operating Temp. Range: -10°C to 40°C (14°F to 104°F)
- Weight with Battery: 4.4 kg (9.7 lb)
- Dimensions: 530 x 76 x 317 mm
- Part Number: 399011329900

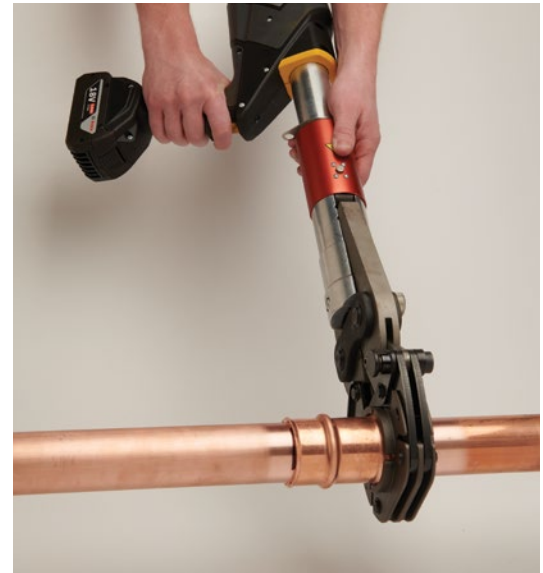
Accessories included with tool:

- Depth/press gauge
Part Number: 399040501
- Permanent marker
- Wire brush (for collar jaw cleaning)
- Abrasive pad

Jaws:

- 2-1/8" Collar Jaw**
Part Number: 399021321340
- 1-5/8" Collar Jaw**
Part Number: 399021321260
- Actuator Jaw**
Part Number: 399021321000

Actuator Jaw is required and is used with both 1-5/8" and 2-1/8" collar jaws. Must be used with Klauke 32 kN Long Throw Tool.



“Overall, we’ve seen that most of our project times have been cut in half using RLS fittings. On bigger jobs, where it might have taken us two weeks to pipe a job in the past, it’s only taken a week.”

– Alex Bishoff
Howard Mechanical Services



TECHNICAL DATA

Applications

- High Pressure HVAC/R
- Ethylene Glycol
- Non-Potable Water

Product Parameters

- Continuous Operating Temperature: 250°F / 121°C
- O-Ring Temperature Rating: -40°F to +300°F / -40°C to +149°C
- Maximum Allowable Working Pressure (MAWP): 700 psi / 48 bar
- Minimum Required Test Pressure (UL 207): 2,100 psi / 145 bar
- Vacuum Pressure Capability: <200 Microns
- External Helium Leak Rate: $<7.5 \times 10^{-7}$ Pa·m³/s per ISO 14903
- Vibration Resistance: Conforms to UL 207
- Pull Test: Compliant with UL 207 for A1 fluids
- Size Availability (Inches): 1/4, 5/16, 3/8, 1/2, 5/8, 3/4, 7/8, 1, 1-1/8, 1-1/4, 1-3/8, 1-5/8, 2-1/8

Fitting Materials

- Fitting Body: Refrigerant Grade Copper, per ASTM-B75 or ASTM-B743
- O-Ring: HNBR

Compatibility

- Approved Oils: Mineral Oil, POE, PVE, PAG
- Approved Tubing Materials: Copper-to-Copper Connections
- Approved Tubing Tolerance: ASTM B88/B280, EN 12735 & AS/NZS 1571
- Approved Copper Tubing Types for 32 kN Tool/Jaws
 - Hard/Drawn: 1/4" - 2-1/8" Type ACR, L, K
 - Soft/Annealed: 1/4" - 1-3/8" Type ACR, L, K
- Approved Copper Tubing Types for 19 kN and 24 kN Tool/Jaws
 - Hard/Drawn: 1/4" - 1-3/8" Type ACR, L, K
 - Soft/Annealed: 1/4" - 1-3/8" Type ACR, L, K
- Approved Copper Tubing Types for 15 kN Tool/Jaws
 - Hard/Drawn: 1/4" - 1-1/8" Type ACR, L; 1/4" - 7/8" Type K
 - Soft/Annealed: 1/4" - 1-1/8" Type ACR, L; 1/4" - 7/8" Type K

Agency Approvals and Certifications

- UL Listed: 207, SA#33958, SDTW (7) (Except where noted)
- UL Listed: Approved Use For Field & Factory Installations
- ISO 5149-2: Part 2 Compliant
- ASHRAE-15, ANSI 15, ASME B31.5 (504.7)
- ICC-ES, PMG-1296
- International Mechanical Code (IMC) 2021, 2018, 2015, 2012, 2009, 2006
- International Residential Code (IRC) 2021, 2018, 2015, 2012, 2009, 2006
- Uniform Mechanical Code (UMC) 2021, 2018, 2015, 2012, 2009, 2006
- CRN 0A22551 and 0A18303
- JCDA Certified

RLS Press Fitting Patents

- U.S. Patent No. 9,145,992
- U.S. Patent No. 9,638,361
- U.S. Patent No. D730,494
- Australian Patent No. 2012362443
- Brazilian Patent No. BR112014016012-0
- Canadian Patent No. 2,800,360
- Canadian Design Registration No. 149228
- EUIPO Registered Community Design No. 002218636-0001
- Japanese Patent No. 6051468
- Other Pending Patent Applications

RLS Press Tools and Jaws Patents

- Australian Design Registration No. 361533
- Canadian Design Registration No. 161804
- EUIPO Registered Community Design No. 002672667-0001
- Japanese Design Registration No. 1537545
- Other Pending Patent Applications

⚠ WARNING: Some of our ancillary products can expose you to chemicals including lead, which is known to the State of California to cause cancer and birth defects or other reproductive harm. For more information go to www.P65Warnings.ca.gov.

PROUDLY MADE IN AMERICA 



Download the RLS Toolbox App!



Access Literature



rapidlockingsystem.com
training.rapidlockingsystem.com

info@rapidlockingsystem.com • 314-907-0300